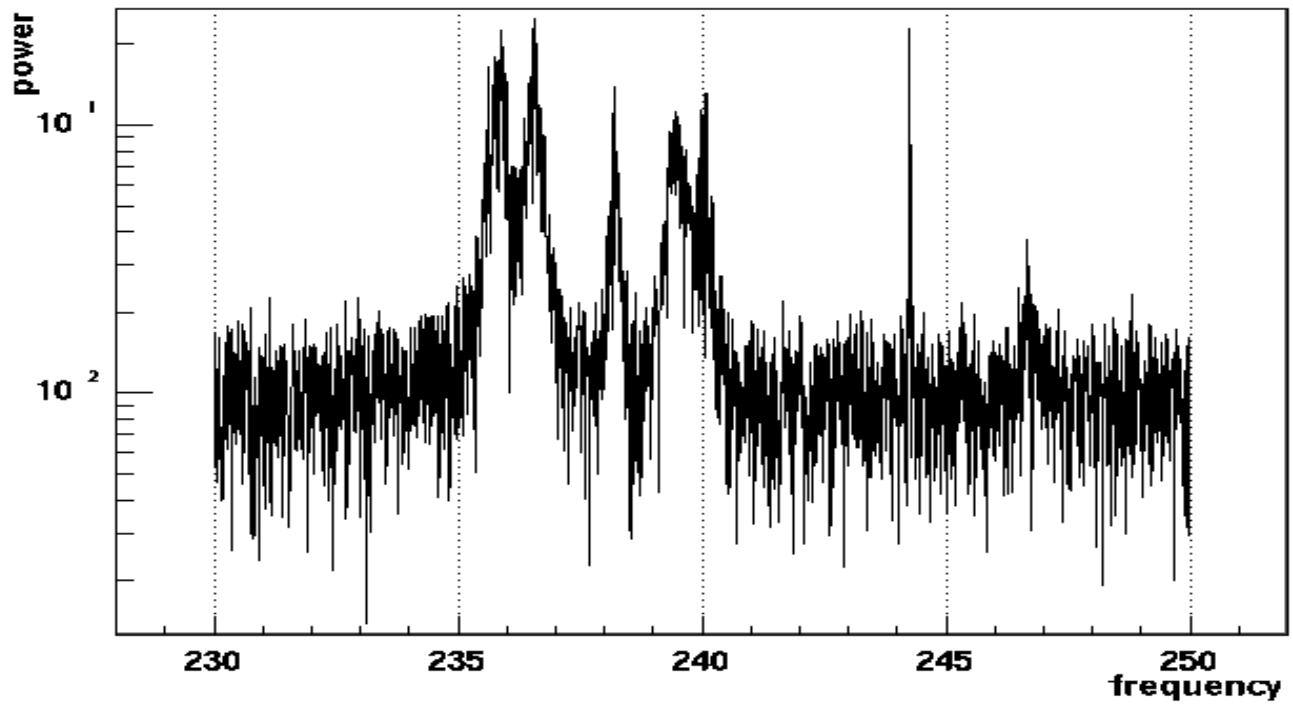


# BS violin modes



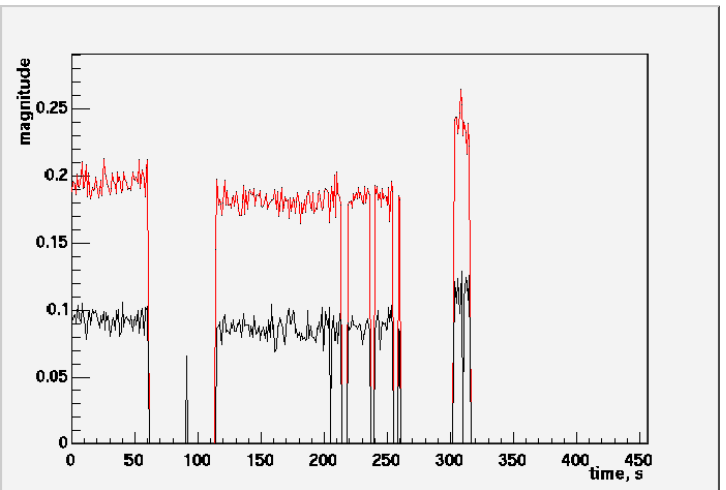
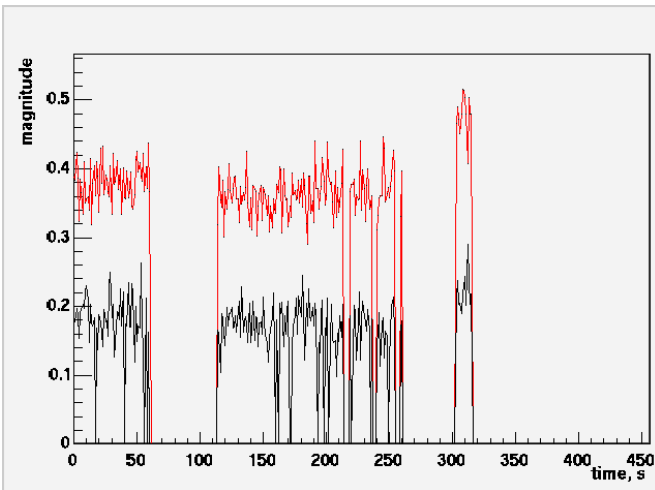
# E4 LLO calibration lines

start time at 1:16am 05/12/01

Amplitude (a.u.)

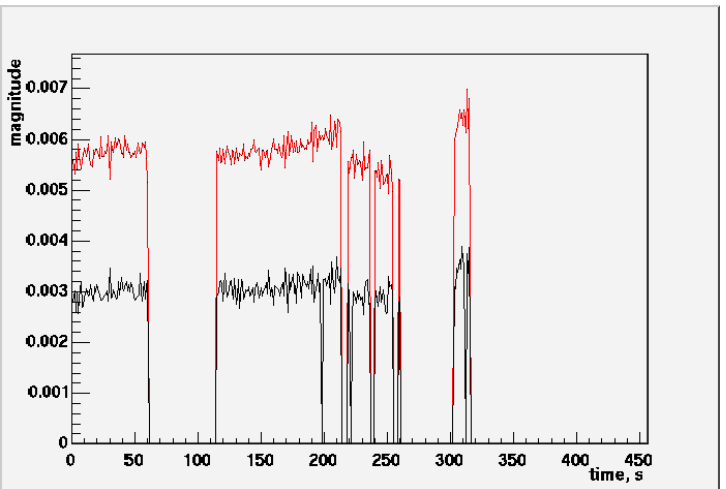
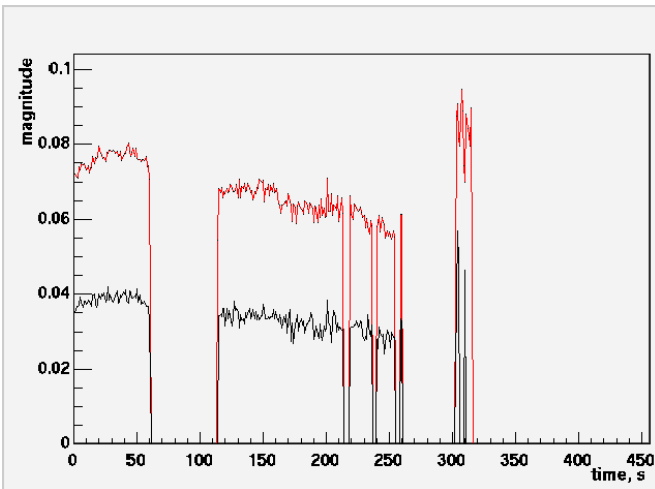
Red – 35Hz(ITMX), black – 36Hz(ETMX)

Red – 71Hz(ITMX), black – 72Hz(ETMX)



Red – 271Hz(ITMX), black – 272Hz(ETMX)

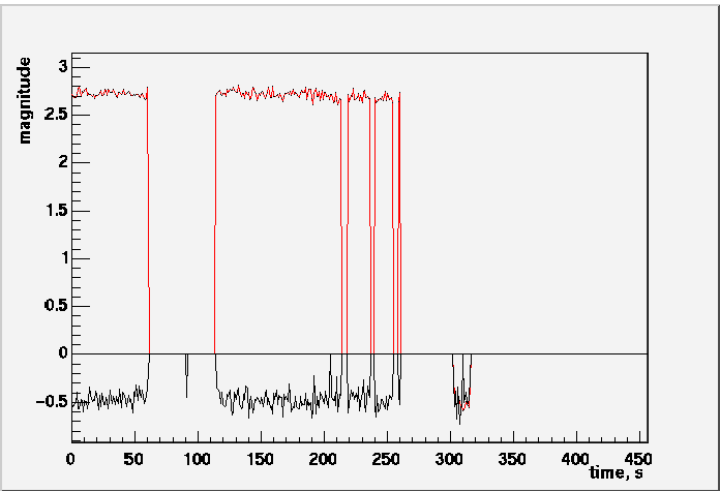
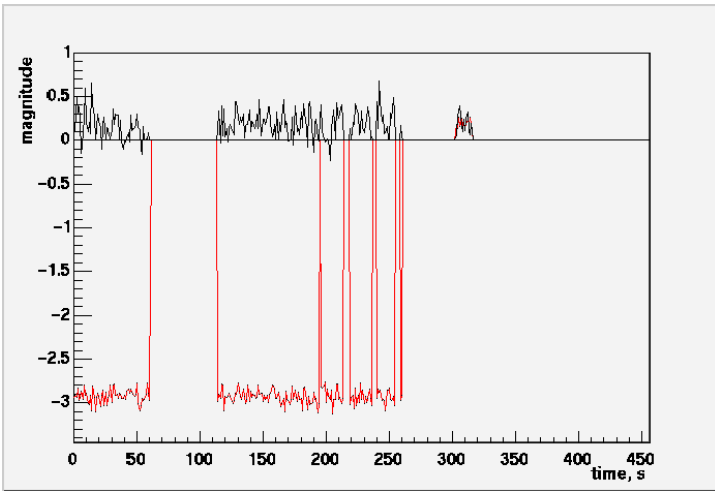
Red – 1001Hz(ITMX), black – 1002Hz(ETMX)



# Phase (rad)

Red – 35Hz(ITMX), black – 36Hz(ETMX)

Red – 71Hz(ITMX), black – 72Hz(ETMX)



Red – 271Hz(ITMX), black – 272Hz(ETMX)

Red – 1001Hz(ITMX), black – 1002Hz(ETMX)

