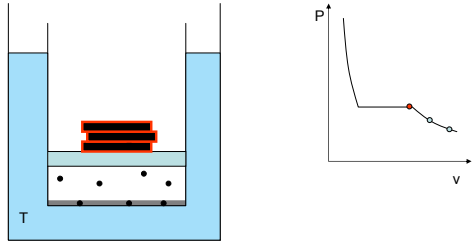
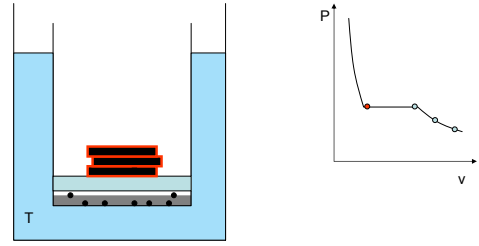


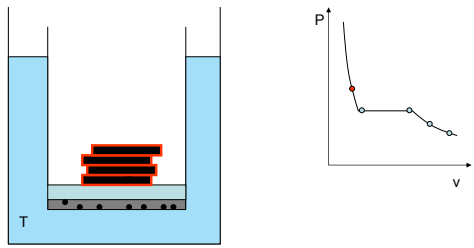
Liquefying a gas by applying pressure



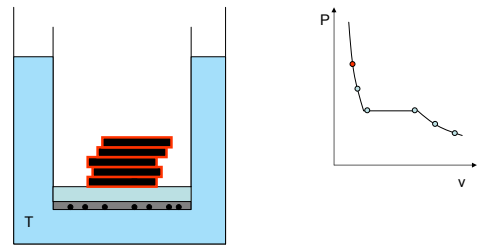
Liquefying a gas by applying pressure



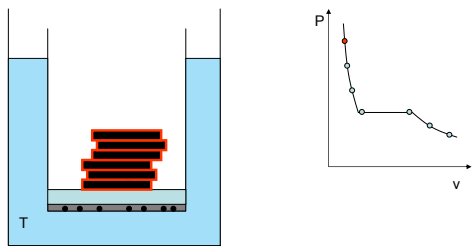
Liquefying a gas by applying pressure



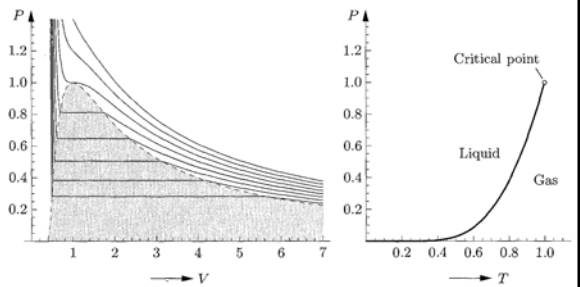
Liquefying a gas by applying pressure



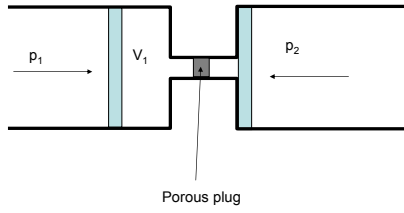
Liquefying a gas by applying pressure



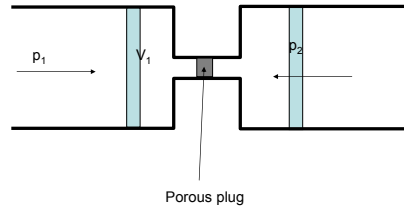
Two phase region in the vdW gas



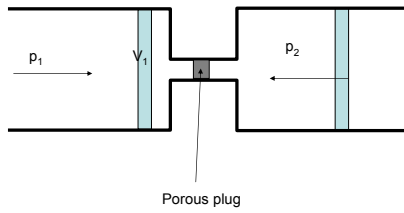
Joule-Thomson or Joule-Kelvin expansion



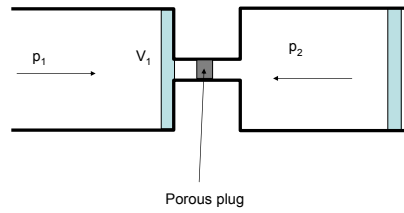
Joule-Thomson or Joule-Kelvin expansion



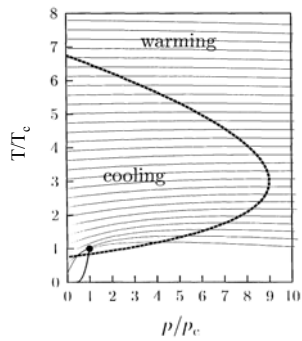
Joule-Thomson or Joule-Kelvin expansion



Joule-Thomson or Joule-Kelvin expansion



The Joule-Thomson coefficient: (inversion temperature)



Cooling using J-T process

